



**FULLY ESCORTED TOUR PACKAGE**



# AnimeJapan

## TOURS

Experience the most popular Anime Fair in Tokyo during its most beautiful season!

**JapanDeluxeTours.com**

Toll Free: 1-800-AT JAPAN

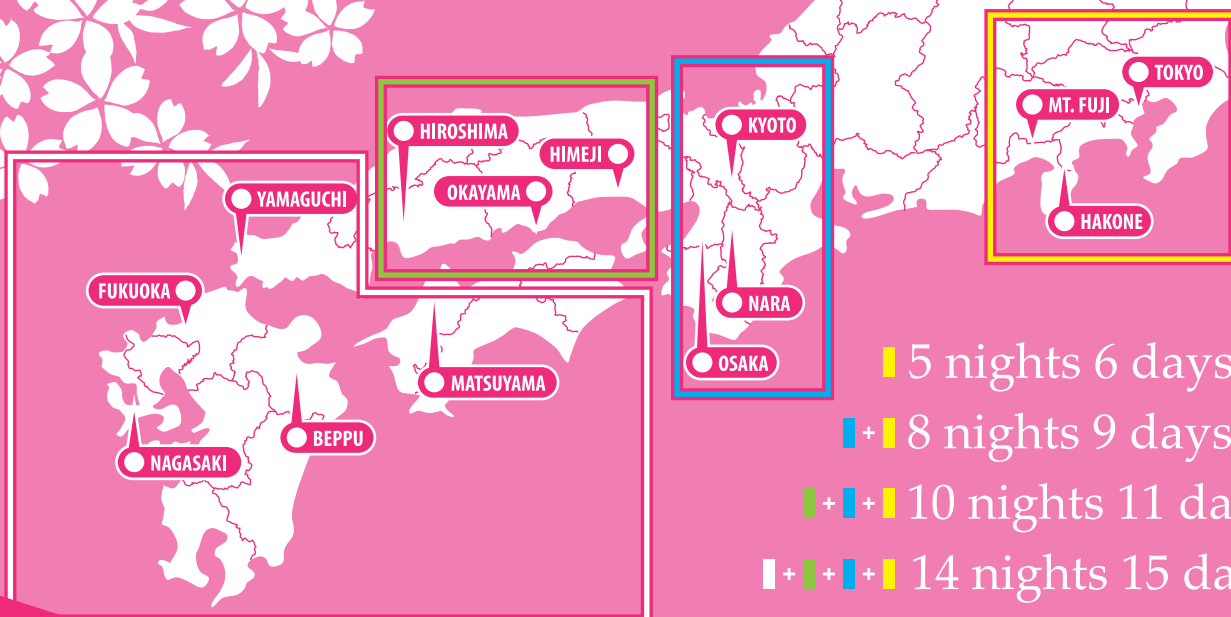
**JAPAN**  
DELUXE TOURS

CST 2045303-40



アニメ

ANIME



5 nights 6 days

+ 8 nights 9 days

+ 10 nights 11 days

+ 14 nights 15 days

# Tour Highlights

## Tokyo

AnimeJapan, Akihabara, Animate, J-World, Pokemon Center, Gundam Front, Ghibli Museum, Nakano Broadway, Asakusa, Robot Restaurant, Harajuku, Shibuya, Tsukiji Outer Fish Market, Tokyo Tower, Ramen



Anime Japan



J-World



Robbot Restaurant



Kiddy Land



Pokemon Center



Harajuku



Crepe



Ghibli Museum



Tsukiji Fish Market



Akihabara



Nakano Broadway



Asakusa



Gundam Front



Ramen



One Piece Restaurant

## Land Tour Package

Ⓐ Standard Hotel Plan Ⓑ Upgraded Hotel Plan

**\$1,898** **\$2,398**

**5 nights 6 days**

## Includes:



**9 meals**



**5 nights**

5 Western Style

Rates per person based on double occupancy.  
Single occupancy Ⓐ \$200 Ⓑ \$500  
Please refer to the printed insert  
or visit our website for updated departure dates.

# Take a break from the real world and escape to the land of Anime and Manga.

Spend 6 magical days exploring anime and manga spots no true fan would skip. From the imaginative Ghibli Museum to the giant Gundam, we've kept the best on this fan-favorite Japan tour. Get lost in Akihabara where you can find the best

electronics and anime goods, catch Pikachu at the Pokemon Center, and watch towering robots at the Robot Restaurant. Hey Jump fans, we also have a trip to J-World, the Jump-inspired theme park, and Tokyo One Piece Tower.

We even have an optional day trip to Yoyogi Animation School to help future manga artists or voice actors learn new skills! If you want to see Japan's Anime and Manga culture at its finest, this tour has your name on it.

## Itinerary



Air



Bus



Train



Bullet Train



Walk



Boat



Ropeway

### Day 1 Arrival Tokyo

✈ **Tokyo Airport (Narita Int'l Airport/Haneda Airport)**

Arrive at Narita International Airport. We will have transportation services to take you to your hotel.

Standard : Hearton Hotel Higashi Shinagawa / Upgrade : Radisson Narita or similar

### Day 2 Full Day Tokyo

(Breakfast / Lunch / Dinner)

**Morning** 🚌 [Tokyo] J-World 🚌 Pokemon Center

**Afternoon** 🚌 Tsukiji Outer Fish Market 🚌 Asakusa Sensoji Temple

**Evening** 🚌 [Akihabara] Animate 🚌 Hotel

Standard : Hearton Hotel Higashi Shinagawa / Upgrade : Grand Nikko Tokyo or similar

### Day 3 Anime Japan

(Breakfast)

**Early Morning** 🚌 Complimentary Optional Tour : Tsukiji Fish Market-Tuna Auction

**Morning** 🚌 Tokyo Big Sight-AnimeJapan

**Afternoon** 🚌 Tokyo Big Sight-AnimeJapan or 🚌 Harajuku 🚌 Shibuya

**Evening** 🚌 Gundam Front 🚌 Hotel

Standard : Hearton Hotel Higashi Shinagawa / Upgrade : Grand Nikko Tokyo or similar

### Day 4 Full Day Tokyo

(Breakfast / Lunch / Dinner)

**Morning** 🚌 Ghibli Museum 🚌 Nakano Broadway

**Afternoon** 🚌 Tokyo One Piece Tower 🚌 Robot Restaurant

**Evening** 🚌 Hotel

Standard : Hearton Hotel Higashi Shinagawa / Upgrade : Tokyo Dome or similar

### Day 5 Full Day Tokyo \*Optional Tours available

(Breakfast)

**Morning** 🚶 Free at own your leisure or 🚌 Yoyogi Animation (Workshop)\*

**Afternoon** 🚶 Free at own your leisure or 🚌 Harajuku\* 🚌 Shibuya\*

**Evening** 🚶 Hotel

Standard : Hearton Hotel Higashi Shinagawa / Upgrade : Tokyo Dome or similar

### Day 6 Departure Tokyo

(Breakfast)

This is the last day of your Japan tour. Fly home with cherished memories, or enjoy your extended stay\*\*

**Hotels & Itineraries are subject to change without prior notice.**

\*Please check the back of this flyer or our website to see some of our optional add-on tours. Additional fees may apply for optional tours.



## Land Tour Package

Ⓐ Standard Hotel Plan Ⓑ Upgraded Hotel Plan

**\$2,598** **\$2,998**

**8 nights 9 days**

## Includes:



**15 meals**



**8 nights**

7 Western Style  
1 Japanese Style

Rates per person based on double occupancy.  
Single occupancy Ⓐ \$400 Ⓑ \$800  
Please refer to the printed insert  
or visit our website for updated departure dates.

# Tour Highlights



Fushimi Inari Shrine

## Kyoto

Golden Pavilion, Fushimi Inari Shrine,  
Ninja Restaurant



Ninja Restaurant



**Nara** Nara Deer Park  
Todaiji Temple-Great Buddha,  
Nara Deer Park



Lake Ashi



Owakudani



Green Tea Ceremony

## Hakone/Mt.Fuji/Atami

Lake Ashi, Hakone Ropeway, Owakudani Boiling  
Valley, Eva-ya



Dotonbori

## Osaka Dotonbori

## J CULTURE



## High Tech toilets

Japanese toilets are high tech and do much more  
than just flush. The seats are warm and have bidet  
functions that spray water from the front or back.  
These toilets even play sounds that imitate  
flushing sounds to mask any sounds.

### Day 1 Arrival Tokyo

#### ✈ Tokyo Airport (Narita Int'l Airport/Haneda Airport)

Arrive at Narita International Airport. We will have transportation services to take you to your hotel.

Standard : Hearton Hotel Higashi Shinagawa / Upgrade : Radisson Narita or similar

### Day 2 Full Day Tokyo

(Breakfast / Lunch / Dinner)

Morning 🚌 [Tokyo] J-World 🚌 Pokemon Center

Afternoon 🚌 Tsukiji Outer Fish Market 🚌 Asakusa Sensoji Temple

Evening 🚌 [Akihabara] Animate 🚌 Hotel

Standard : Hearton Hotel Higashi Shinagawa / Upgrade : Grand Nikko Tokyo or similar

### Day 3 Anime Japan

(Breakfast)

Early Morning 🚌 Complimentary Optional Tour : Tsukiji Fish Market-Tuna Auction

Morning 🚌 Tokyo Big Sight-AnimeJapan

Afternoon 🚌 Tokyo Big Sight-AnimeJapan or 🚌 Harajuku 🚌 Shibuya

Evening 🚌 Gundam Front 🚌 Hotel

Standard : Hearton Hotel Higashi Shinagawa / Upgrade : Grand Nikko Tokyo or similar

### Day 4 Full Day Tokyo

(Breakfast / Lunch / Dinner)

Morning 🚌 Ghibli Museum 🚌 Nakano Broadway

Afternoon 🚌 Tokyo One Piece Tower 🚌 Robot Restaurant

Evening 🚌 Hotel

Standard : Hearton Hotel Higashi Shinagawa / Upgrade : Tokyo Dome or similar

### Day 5 Full Day Tokyo \*Optional Tours available

(Breakfast)

Morning 🚌 Free at own your leisure or 🚌 Yoyogi Animation (Workshop)\*

Afternoon 🚌 Free at own your leisure or 🚌 Harajuku\* 🚌 Shibuya\*

Evening 🚌 Hotel

Standard : Hearton Hotel Higashi Shinagawa / Upgrade : Tokyo Dome or similar

### Day 6 Mt. Fuji & Hakone

(Breakfast / Lunch / Dinner)

Morning 🚌 Mt. Fuji or Fuji Visitor Center

Afternoon 🚌 [Hakone] Eva-ya 🚌 Owakudani-Boiling Valley

🚌 Hakone Ropeway & Owakudani Ropeway 🚌 Lake Ashi Cruise

Evening 🚌 Bullet Train Ride Experience 🚌 Hotel

Hotel : Honnoji Kyoto / Biwako Hotel or similar

### Day 7 Kyoto & Nara

(Breakfast / Lunch)

Morning 🚌 [Kyoto] Golden Pavilion 🚌 Fushimi Inari Shrine 🚌 Ninja Restaurant

Afternoon 🚌 [Nara] Todaiji Temple(Giant Buddha) 🚌 Nara Deer Park

Evening 🚌 [Osaka] Dotonbori 🚌 Hotel

Hotel : Kyoto Central Inn / Kyoto Tokyu or similar

### Day 8 Kyoto \*Optional Tours available

(Breakfast)

Morning 🚌 Free at own your leisure or 🚌 Kimono & Pictures at Kiyomizu Temple\*

Afternoon 🚌 Free at own your leisure or 🚌 Maiko Dinner\*

Evening 🚌 Hotel

Hotel : Kyoto Central Inn / Kyoto Tokyu or similar

### Day 9 Departure Osaka

(Breakfast)

This is the last day of your Japan tour. Fly home with cherished memories, or enjoy your extended stay\*\*

**Hotels & Itineraries are subject to change without prior notice.**

\*Please check the back of this flyer or our website to see some of our optional add-on tours.  
Additional fees may apply for optional tours.



## Land Tour Package

# \$3,698

### Includes:

**19 meals****10 nights**9 Western Style  
1 Japanese Style

Rates per person based on double occupancy.  
Single occupancy \$1,000  
Please refer to the printed insert  
or visit our website for updated departure dates.

## 10 nights 11 days

## Tour Highlights



Miyajima-Itsukushima Shrine



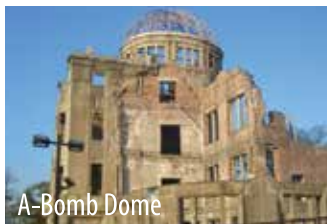
Miyajima-Itsukushima Shrine



Miyajima-Itsukushima Shrine



Himeji Castle



A-Bomb Dome

## Osaka/ Himeji/Hiroshima

Himeji Castle, Miyajima-Itsukushima Shrine, A-Bomb Dome, Hiroshima Peace Park, Cup Noodle Museum

## Itinerary



Air



Bus



Train



Bullet Train



Walk



Boat



Ropeway

### Day 1 Arrival Tokyo

✈ Tokyo Airport (Narita Int'l Airport/Haneda Airport)

Arrive at Narita International Airport. We will have transportation services to take you to your hotel.

Hotel : Radisson Narita or similar

### Day 2 Full Day Tokyo

(Breakfast / Lunch / Dinner)

Morning 🚌 [Tokyo] J-World 🚌 Pokemon Center

Afternoon 🚌 Tsukiji Outer Fish Market 🚌 Asakusa Sensoji Temple

Evening 🚌 [Akihabara] Animate 🚌 Hotel

Hotel : Grand Nikko Tokyo or similar

### Day 3 Anime Japan

(Breakfast)

Early Morning 🚌 Complimentary Optional Tour: Tsukiji Fish Market-Tuna Auction

Morning 🚌 Tokyo Big Sight-AnimeJapan

Afternoon 🚌 Tokyo Big Sight-AnimeJapan or 🚌 Harajuku 🚌 Shibuya

Evening 🚌 Gundam Front 🚌 Hotel

Hotel : Grand Nikko Tokyo or similar

### Day 4 Full Day Tokyo

(Breakfast / Lunch / Dinner)

Morning 🚌 Ghibli Museum 🚌 Nakano Broadway

Afternoon 🚌 Tokyo One Piece Tower 🚌 Robot Restaurant

Evening 🚌 Hotel

Hotel : Tokyo Dome or similar

### Day 5 Full Day Tokyo \*Optional Tours available

(Breakfast)

Morning 🚶 Free at own your leisure or 🚌 Yoyogi Animation (Workshop)\*

Afternoon 🚶 Free at own your leisure or 🚌 Harajuku\* 🚌 Shibuya\*

Evening 🚌 Hotel

Hotel : Tokyo Dome or similar

### Day 6 Mt. Fuji & Hakone

(Breakfast / Lunch / Dinner)

Morning 🚌 Mt. Fuji or Fuji Visitor Center

Afternoon 🚌 [Hakone] Eva-ya 🚌 Owakudani-Boiling Valley

🚌 Hakone Ropeway & Owakudani Ropeway 🚢 Lake Ashi Cruise

Evening 🚶 Bullet Train Ride Experience 🚌 Hotel

Hotel: Biwako Hotel or similar

### Day 7 Kyoto & Nara

(Breakfast / Lunch)

Morning 🚌 [Kyoto] Golden Pavilion 🚌 Fushimi Inari Shrine 🚌 Ninja Restaurant

Afternoon 🚌 [Nara] Todaiji Temple(Giant Buddha) 🚶 Nara Deer Park

Evening 🚌 [Osaka] Dotonbori 🚌 Hotel

Hotel : Kyoto Tokyu or similar

### Day 8 Kyoto \*Optional Tours available

(Breakfast)

Morning 🚶 Free at own your leisure or 🚶 Kimono & Pictures at Kiyomizu Temple\*

Afternoon 🚶 Free at own your leisure or 🚶 Maiko Dinner\*

Evening 🚌 Hotel

Hotel : Kyoto Tokyu or similar

### Day 9 Osaka, Himeji

(Breakfast / Lunch)

Morning 🚌 [Osaka] Cup Noodle Museum

Afternoon 🚌 [Himeji] Himeji Castle

Evening 🚌 Hotel

Hotel : Rihga Hiroshima Hotel or similar

### Day 10 Full Day Hiroshima

(Breakfast / Lunch)

Morning 🚌 Hiroshima Peace Memorial Park & A-Bomb Dome

Afternoon 🚢 [Miyajima] Itsukushima Shrine 🚶 Hiroshima Sightseeing

Evening 🚌 Hotel

Hotel : Rihga Hiroshima Hotel or similar

### Day 11 Departure Hiroshima

(Breakfast)

This is the last day of your Japan tour. Fly home with cherished memories, or enjoy your extended stay\*\*

**Hotels & Itineraries are subject to change without prior notice.**

\*Please check the back of this flyer or our website to see some of our optional add-on tours. Additional fees may apply for optional tours.





## Land Tour Package

# \$4,998

## Includes:



# 29 meals



# 14 nights

12 Western Style  
2 Japanese Style

Rates per person based on double occupancy.  
Single occupancy \$1,400  
Please refer to the printed insert  
or visit our website for updated departure dates.

# 14 nights 15 days

## Tour Highlights

### Saga

Yoshinogari Historical Park  
Arita Porcelain

### Nagasaki

Glover Garden, Oura Church,  
Nagasaki Piece Park, Dejima

### Beppu

The Tour of Hell, Yanagawa

### Takamatsu

Ritsurin Garden

### Tokushima

Awaodori-Dance Museum,  
Naruto Whirlpools

### Matsuyama

Ishiteji Temple, Dogo Onsen,  
Rickshaw, Drum Performance



Dogo Onsen



Awaodori-Dance Museum



The Tour of Hell-blood pond hell

Nagasaki



Naruto Whirlpool

## Itinerary



Air



Bus



Train



Bullet Train



Walk



Boat



Ropeway

### Day 1 Arrival Tokyo

✈️ Tokyo Airport (Narita Int'l Airport/Haneda Airport)

Arrive at Narita International Airport. We will have transportation services to take you to your hotel.

Hotel : Radisson Narita or similar

### Day 2 Full Day Tokyo

(Breakfast / Lunch / Dinner)

Morning 🚌 [Tokyo] J-World 🚌 Pokemon Center

Afternoon 🚌 Tsukiji Outer Fish Market 🚌 Asakusa Sensoji Temple

Evening 🚌 [Akihabara] Animate 🚌 Hotel

Hotel : Grand Nikko Tokyo or similar

### Day 3 Anime Japan

(Breakfast)

Early Morning 🚌 Complimentary Optional Tour : Tsukiji Fish Market-Tuna Auction

Morning 🚌 Tokyo Big Sight-AnimeJapan

Afternoon 🚌 Tokyo Big Sight-AnimeJapan or 🚌 Harajuku 🚌 Shibuya

Evening 🚌 Gundam Front 🚌 Hotel

Hotel : Grand Nikko Tokyo or similar

### Day 4 Full Day Tokyo

(Breakfast / Lunch / Dinner)

Morning 🚌 Ghibli Museum 🚌 Nakano Broadway

Afternoon 🚌 Tokyo One Piece Tower 🚌 Robot Restaurant

Evening 🚌 Hotel

Hotel : Tokyo Dome or similar

### Day 5 Full Day Tokyo \*Optional Tours available

(Breakfast)

Morning 🚌 Free at own your leisure or 🚌 Yoyogi Animation (Workshop)\*

Afternoon 🚌 Free at own your leisure or 🚌 Harajuku\* 🚌 Shibuya\*

Evening 🚌 Hotel

Hotel : Tokyo Dome or similar

### Day 6 Mt. Fuji & Hakone

(Breakfast / Lunch / Dinner)

Morning 🚌 Mt. Fuji or Fuji Visitor Center

Afternoon 🚌 [Hakone] Eva-ya 🚌 Owakudani-Boiling Valley

🚌 Hakone Ropeway & Owakudani Ropeway 🚌 Lake Ashi Cruise

Evening 🚌 Bullet Train Ride Experience 🚌 Hotel

Hotel : Biwako Hotel or similar

### Day 7 Kyoto & Nara

(Breakfast / Lunch)

Morning 🚌 [Kyoto] Golden Pavilion 🚌 Fushimi Inari Shrine 🚌 Ninja Restaurant

Afternoon 🚌 [Nara] Todaiji Temple(Giant Buddha) 🚌 Nara Deer Park

Evening 🚌 [Osaka] Dotonbori 🚌 Hotel

Hotel : Kyoto Tokyu or similar

### Day 8 Kyoto \*Optional Tours available

(Breakfast)

Morning 🚌 Free at own your leisure or 🚌 Kimono & Pictures at Kiyomizu Temple\*

Afternoon 🚌 Free at own your leisure or 🚌 Maiko Dinner\*

Evening 🚌 Hotel

Hotel : Kyoto Tokyu or similar

### Day 9 Osaka & Himeji

(Breakfast / Lunch)

Morning 🚌 [Osaka] Cup Noodle Museum

Afternoon 🚌 [Himeji] Himeji Castle

Evening 🚌 Hotel

Hotel : Rihga Hiroshima Hotel or similar

### Day 10 Full Day Hiroshima

(Breakfast / Lunch)

Morning 🚌 Hiroshima Peace Memorial Park & A-Bomb Dome

Afternoon 🚌 [Miyajima] Itsukushima Shrine 🚌 Kintai Bridge

Evening 🚌 Hotel

Hotel : Fukuoka Hyatt Regency or similar

### Day 11 Saga & Nagasaki

(Breakfast / Lunch / Dinner)

Morning 🚌 [Saga] Yoshinogari Historical Park 🚌 Arita Porcelain

Afternoon 🚌 [Nagasaki] Glover Garden 🚌 Oura Church 🚌 Nagasaki Peace Park

Evening 🚌 Hotel

Hotel : ANA Crowne Plaza Nagasaki Glover Hill or similar

### Day 12 Full Day Beppu

(Breakfast / Lunch / Dinner)

Morning 🚌 [Beppu] Tour of Hell

Afternoon 🚌 Yanagawa Boat Ride

Evening 🚌 Ryokan-Japanese Style Inn

Hotel : Suginoi or similar

### Day 13 Full Day Matsuyama

(Breakfast / Dinner)

Morning 🚌 [Matsuyama] Ishiteji Temple 🚌 Dogo Onsen

Afternoon 🚌 Rickshaw Ride

Evening 🚌 Hotel 🚌 Japanese Drum Show

Hotel : Tsubaki-kan or similar

### Day 14 Shikoku to Osaka

(Breakfast / Lunch)

Morning 🚌 [Takamatsu] Ritsurin Garden 🚌 Awaodori-Dance Museum

Afternoon 🚌 [Tokushima] Naruto Whirlpools

Evening 🚌 [Osaka] Dotonbori 🚌 Hotel

Hotel : Sheraton Miyako Osaka Hotel or similar

### Day 15 Departure Osaka

(Breakfast)

This is the last day of your Japan tour. Fly home with cherished memories, or enjoy your extended stay\*\*

Hotels & Itineraries are subject to change without prior notice.

\*Please check the back of this flyer or our website to see some of our optional add-on tours. Additional fees may apply for optional tours.

# Optional ADD-ONS

Do you love drawing? Dream about being a voice actor? Explore these passions at Yoyogi Animation School, Japan's largest animation school. A day trip includes learning manga illustration and an anime acoustic session. Come learn Animation and Manga art from Japan's best.



## YOYOGI ANIMATION GAKUEN

Is drawing your passion? Do you love animation and manga? Have you ever wanted to try recording your voice to an anime? These passions can be explored at Japan's largest animation school, Yoyogi Animation School. A day trip to this illustrious academy includes learning manga illustration and an anime acoustic session. Learn about Animation and Manga art from the experts. Don't miss the opportunity to learn from the best, the perfect addition for any anime fan or aspiring artist. From \$50



### NINJA SPY ACTION

TOKYO	HALF DAY	\$260/PERSON
-------	----------	--------------

Use shuriken and blowguns to learn the skills and techniques of the deadly Ninja during this interactive morning tour.



### MAIKO DINNER

KYOTO	HALF DAY	\$160/PERSON
-------	----------	--------------

Enjoy an unforgettable meal as an authentic geisha apprentice entertains you for an evening of culture and delight.



### THEME PARK DAY TRIP

TOKYO, OSAKA	1 DAY
--------------	-------

Enjoy a day at Japan's Best theme parks like: Tokyo DisneySea, Universal Studios Japan, or Tokyo Disneyland! (more options available)



### KIMONO DRESSING & STROLLING HISTORIC TEMPLE

KYOTO	HALF DAY	\$220/PERSON
-------	----------	--------------

Dress up in a gorgeous Kimono while you have your picture taken along Kyoto's beautiful scenery.



### HARAJUKU & SHIBUYA CROSSING TOUR

TOKYO	HALF DAY
-------	----------

Discover Harajuku and Shibuya, two of Tokyo's most popular districts for shopping and fashion.



### UENO, YANAKA, SENDAGI HERITAGE WALK

TOKYO	HALF DAY	\$170/PERSON
-------	----------	--------------

Partake in a half day tour to Ueno park and Kanei-ji Temple, along with sightseeing in Yanaka.



### SERENE ARASHIYAMA BAMBOO GROVE

KYOTO	HALF DAY	\$190/PERSON
-------	----------	--------------

Arashiyama is sure to take your breath away, especially the light passing through the Bamboo Grove on this scenic morning tour.



### SUSHI MAKING & SUSHI PARTY

TOKYO	HALF DAY	\$110/PERSON
-------	----------	--------------

Anyone can eat Sushi while in Japan, but to learn how to make sushi is another thing. Of course, you get to eat your lesson at the end!



### PRIVATE TOUR

TOKYO, KYOTO, OSAKA	4 HOURS	FROM \$300/PERSON
---------------------	---------	-------------------

Embark on a day long tour with your own personal guide through Kamakura or Nikko, or other destinations.

\*Transportation costs not included. \*Fees are subject to change. Please contact us for more info.





# Welcome to Japan Deluxe Tours

We've covered everything.  
Which is why you can Dream, Pack and Leave the rest to us.

*Whether you are a first-time visitor or a former resident, Japan Deluxe Tours has the Japan tour for you. At Japan Deluxe Tours, we aim to provide high quality trips at an affordable price. No need to worry about arranging your transportation, accommodations, and activities, we take care of that for you.*

*Having over 30 years of experience, we've created quality Japan tours that appeal to anyone of all ages. With offices in Los Angeles and Tokyo, our staff provides customers with an unmatched level of quality and care. Fluent in English and Japanese, we can handle any issues you may have, or any needs that arise before, during, or after your trip.*

*Our tour guides are government licensed professionals who delight in showing only the best of our country to you. Our tours have flexible schedules to show you the best of Japan while also providing time for you to explore on your own.*

*Whether you want fresh sushi from the famous Tsukiji, pick up electronics or anime goods from Akihabara, soak in Japanese hot-springs, see Mt. Fuji, or go temple hopping in Kyoto, we have the perfect vacation waiting for you.*

## As standard on all our tours

- ✓ **Excellent mix of fine Western style hotels and Japanese style Ryokan**
- ✓ **Most Meals** (Western & Japanese Cuisine)
- ✓ **All ground transportation in Japan**
- ✓ **Admission Fees, Tax & Gratuities**
- ✓ **Free Wifi in Bus & Most hotels**
- ✓ **Round-trip airport transfers with meet assist**  
(Applicable on the designated arrival date)
- ✓ **Full time service of licensed English speaking tour guide**
- ✓ **No local payment**



CST 2045303-40

Information & Reservation  
**Japan Deluxe Tours, Inc.**

1820 W. Carson St., Suite 224, Torrance, CA 90501, USA (Abalone Plaza)

**1-310-327-1111** Email [info@japandeluxetours.com](mailto:info@japandeluxetours.com)



**Your Travel Agent**